

LUXURY MEMORY CARE
FOR YOUR LOVED ONE.
PEACE OF MIND
FOR YOU.



MEMORY CARE
AT MORSELIFE HEALTH SYSTEM



RESIDENT-FOCUSED MISSION-DRIVEN

With low employee turnover in a care sector known for attrition, MorseLife stands out for its dedicated staff, who are passionate about our mission. As the only teaching senior living community in Florida, MorseLife provides three times the State required weekly care standards.

At MorseLife Memory Care, you can feel confident that your loved one will be safe, secure, and cared for by an award-winning team trained to work with memory loss, so they can provide the high level of specialized care our residents deserve and the peace of mind you need.





SPECIALIZED CARE ENERGIZING PROGRAMS

MorseLife Memory Care provides residents with meaningful activities that optimize social interaction, provide purpose and maximize quality of life.

Creative arts such as painting, baking, crafts, and music therapy help energize and engage residents. Physical activity is integrated into daily life with easy access to age-relevant exercise equipment and personalized fitness classes.

Dining is also a key feature of life at MorseLife Memory Care. Because difficulties with eating can stem from memory loss, we are committed to ensuring that dining is safe, nutritious and delicious. Menus provide choices essential to nourishing cognitive wellness, with three Kosher meals served in a welcoming environment that encourages socialization and creates a sense of community. Options for residents' personal dietary preferences are always available.



CARE, COMFORT, SUPPORT

Our specialized program focusing on dementia and other memory disorders is directed and staffed by a dedicated professional team with extensive experience caring for individuals with memory impairment.

We offer activities to encourage residents' engagement and foster their well-being:

- MorseLife Music and Memory® program to enhance cognitive and physical functioning
- Arts, dance, fitness, baking and socialization
- Virtual reality to create meaningful, personalized experiences





FEELS LIKE HOME

Because feeling safe, secure, and “at home” is critical to the well-being of individuals with memory disorders, we do everything possible to create a luxurious, home-like, yet secure environment. MorseLife Memory Care is designed to make life enjoyable, supportive, and comfortable for our residents and their families.

- Private apartments in a tranquil “neighborhood” setting
- Seven spacious floor plans with kitchenettes and full baths, many with a private living room
- Beautifully landscaped secure courtyard and garden
- Personally customized life-enriching activities
- Three Kosher meals daily served in our luxurious dining room
- Routine housekeeping and personal laundry services
- Salon
- Library and Community Rooms
- Private accommodations for family visits
- Emergency Call System
- All utilities

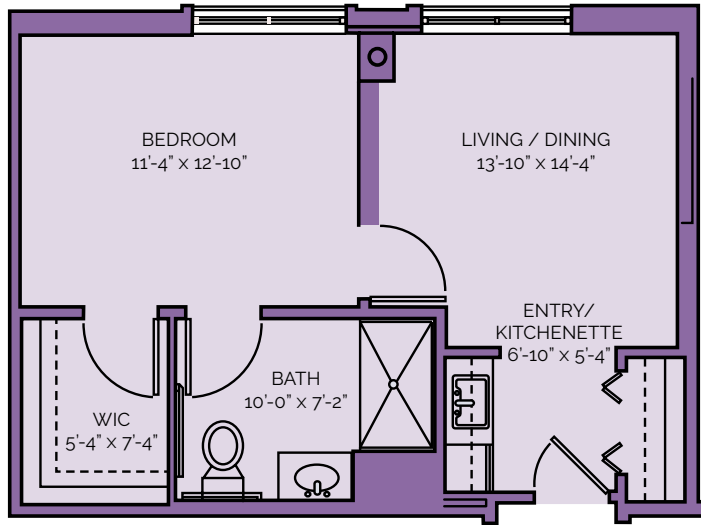


EVERY PERSON MATTERS

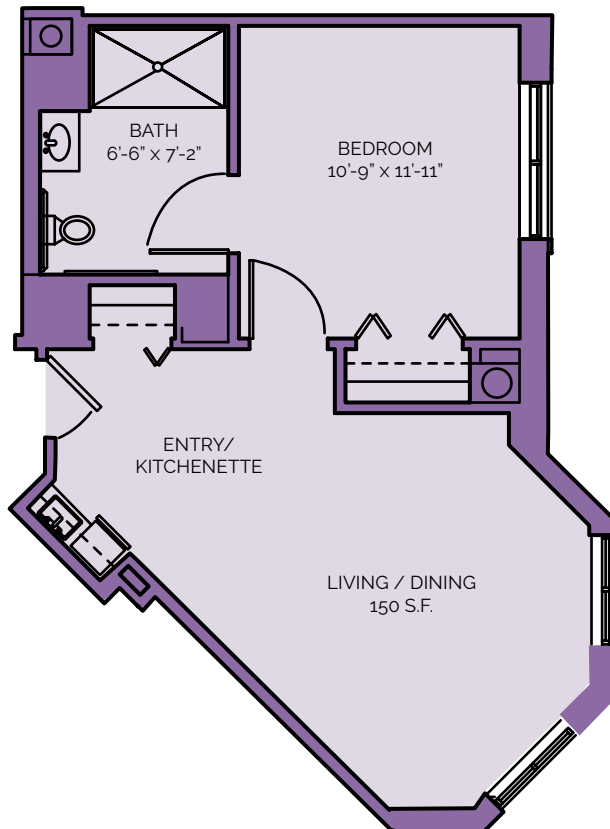
At MorseLife Memory Care, we believe all our residents are unique. Our program is focused exclusively on the healthcare and social support needs of each individual and their family.

- Licensed nurses
- Nurses' aides and staffing 24/7
- Medication administration
- Harvard-trained physician
- The only Florida-licensed senior living community to provide cannabis-based therapies
- Onsite physician visits from specialist in mental health and psychiatry, podiatry, dermatology, physical therapy and audiology
- Transportation to physicians appointments within Palm Beach County
- Family support groups
- Personalized wellness programs
- Shabbat and Jewish holiday services
- Campus synagogue, onsite Rabbi and Chaplain

LARGE DATE PALM 1 BR / 1 BA / 500 sq. FT



PALMETTO PALM 1 BR / 1 BA / 500 sq. FT



ALL-INCLUSIVE PRICES

Unlike many memory care residences where monthly costs can rapidly escalate based on levels of care and service, at MorseLife Memory Care, your fee is always all-inclusive.

MONTHLY FEE INCLUDES:

- 24-hour staffing
- 3 Kosher meals served in our luxurious dining room
- All utilities
- Routine housekeeping including fresh linens
- Assistance with activities of daily life
- Medication administration
- Transportation to physician appointments
- Personal laundry

For more information call:
561.408.7982

Marilyn and Stanley M. Katz Seniors Campus
4847 David S. Mack Drive, West Palm Beach, FL 33417

MorseLife.org



Licensed Assisted Living Facility. AL10577

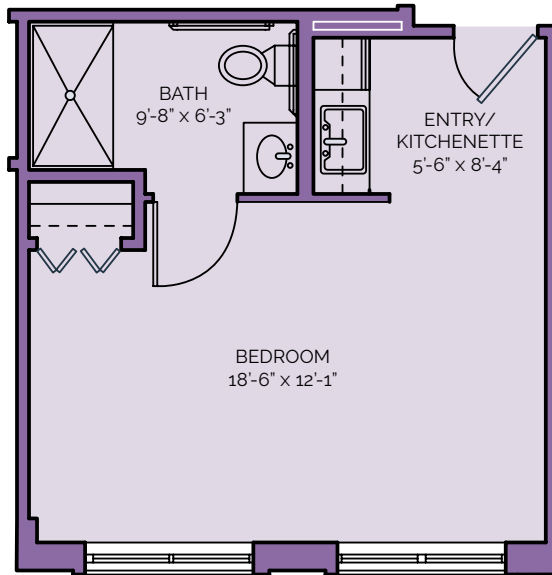


All-Inclusive Memory Care

FLOOR PLANS & MONTHLY RATES

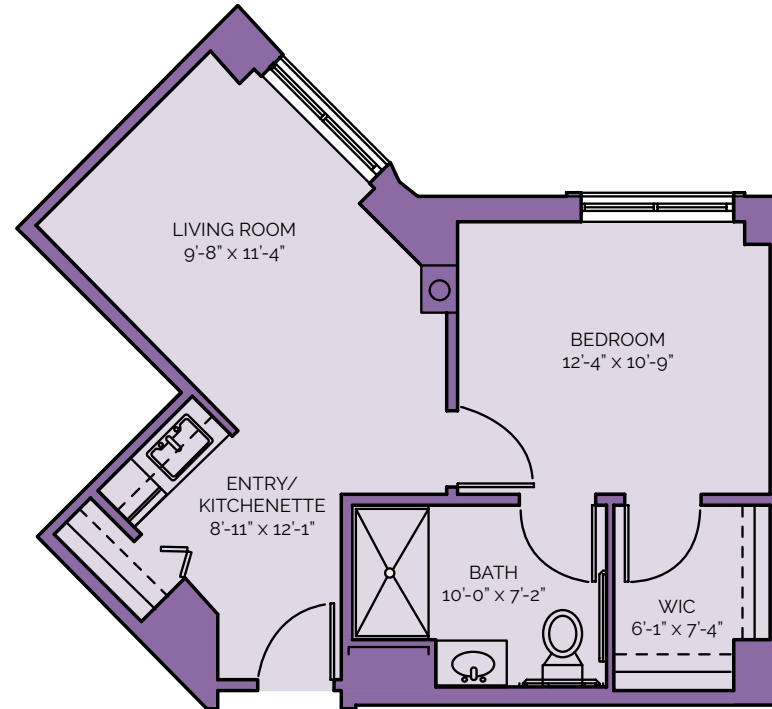
COCONUT PALM

STUDIO / 375 SQ. FT



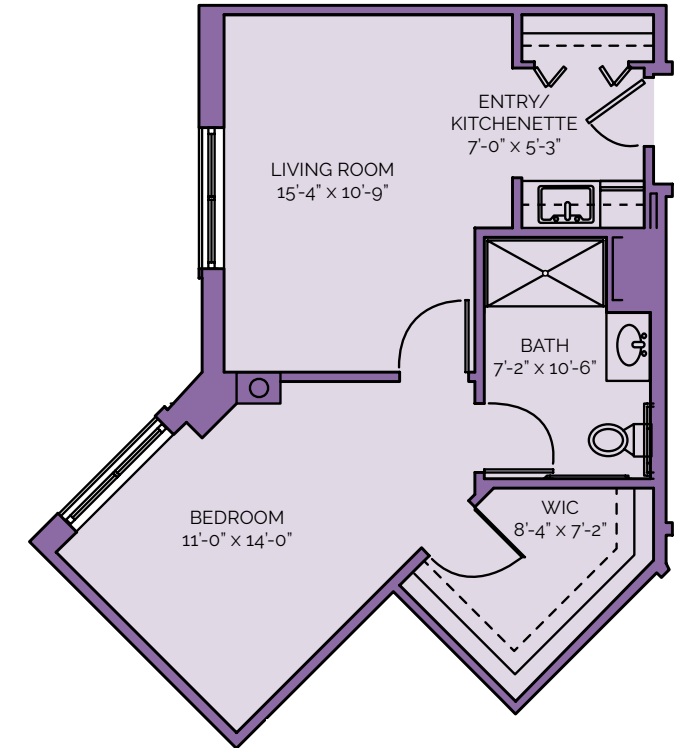
QUEEN PALM

1 BR / 1 BA / 525 SQ. FT



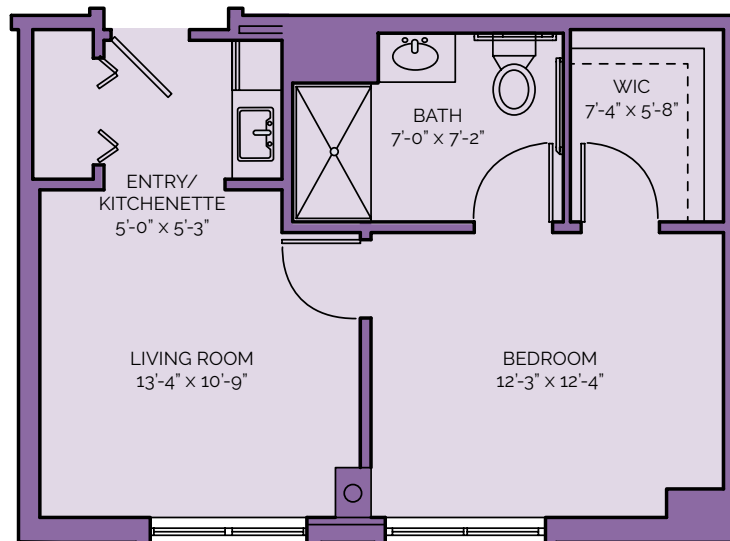
WASHINGTON PALM

1 BR / 1 BA / 550 SQ. FT



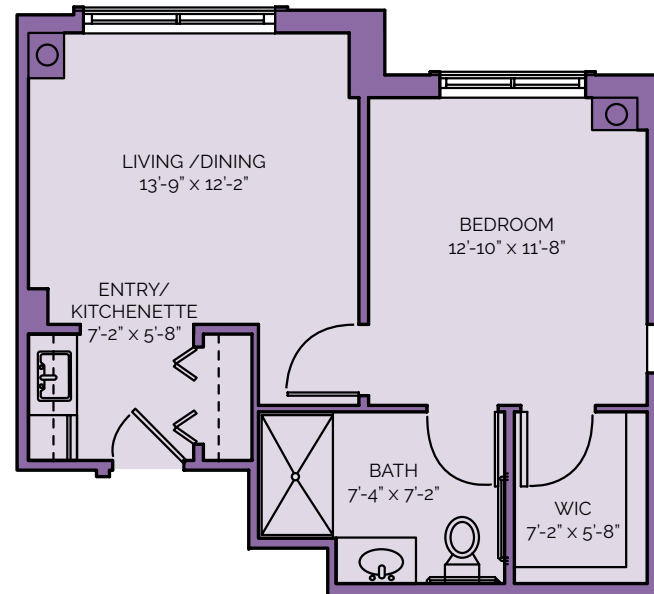
DATE PALM

1 BR / 1BA / 475 SQ. FT



ROYAL PALM

1 BR / 1 BA / 550 SQ. FT



Apartment Name	Square Footage	Apartment Type	Assisted Living All-inclusive
Coconut Palm	375	Studio	\$7,700
Date Palm	475	1 BR, 1 BA	\$8,250
Large Date Palm	500	1 BR, 1 BA	\$8,650
Palmetto Palm	500	1 BR, 1 BA	\$8,650
Queen Palm	525	1 BR, 1 BA	\$9,050
Royal Palm	550	1 BR, 1 BA	\$9,500
Washington Palm	550	1 BR, 1 BA	\$9,500

Second person fee: \$1,260

*One-time non-refundable \$7,500 membership fee

IN PURSUIT OF EXCELLENCE

From its founding, MorseLife Memory Care has earned a reputation for innovation, dedication and service, implementing best practices for our residents, and being a model for memory care communities nationwide. Today, MorseLife Memory Care continues to evolve with forward-thinking leadership committed to the health and care of our residents.

MorseLife Memory Care offers a nurturing, revitalizing lifestyle and honors the values, customs, and beliefs of those who want to live a traditional Jewish lifestyle. But all are welcome here, regardless of religion, race, creed, or national origin.

MORSELIFE SERVICES:

Assisted Living | Cannabinoid-Based Therapies | Care Management
Holocaust Learning Experience | Home Health Care | Hospice
Independent Living | Long-Term Care | Meals-on-Wheels
Memory Care Assisted Living | NOW for Holocaust Survivors | PACE
Palliative Care | Parkinson's Therapy | Short Term Rehabilitation



MORSELIFE
H E A L T H S Y S T E M

A recognized leader in providing exceptional healthcare, housing and support services for seniors in Palm Beach County.

561.408.7982

MorseLife.org

Marilyn and Stanley M. Katz Seniors Campus
4847 David S. Mack Drive, West Palm Beach, FL 33417



License #AL10577